

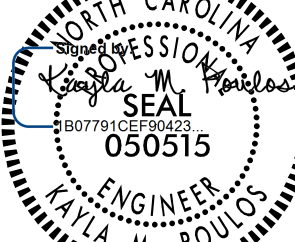

8/17/99

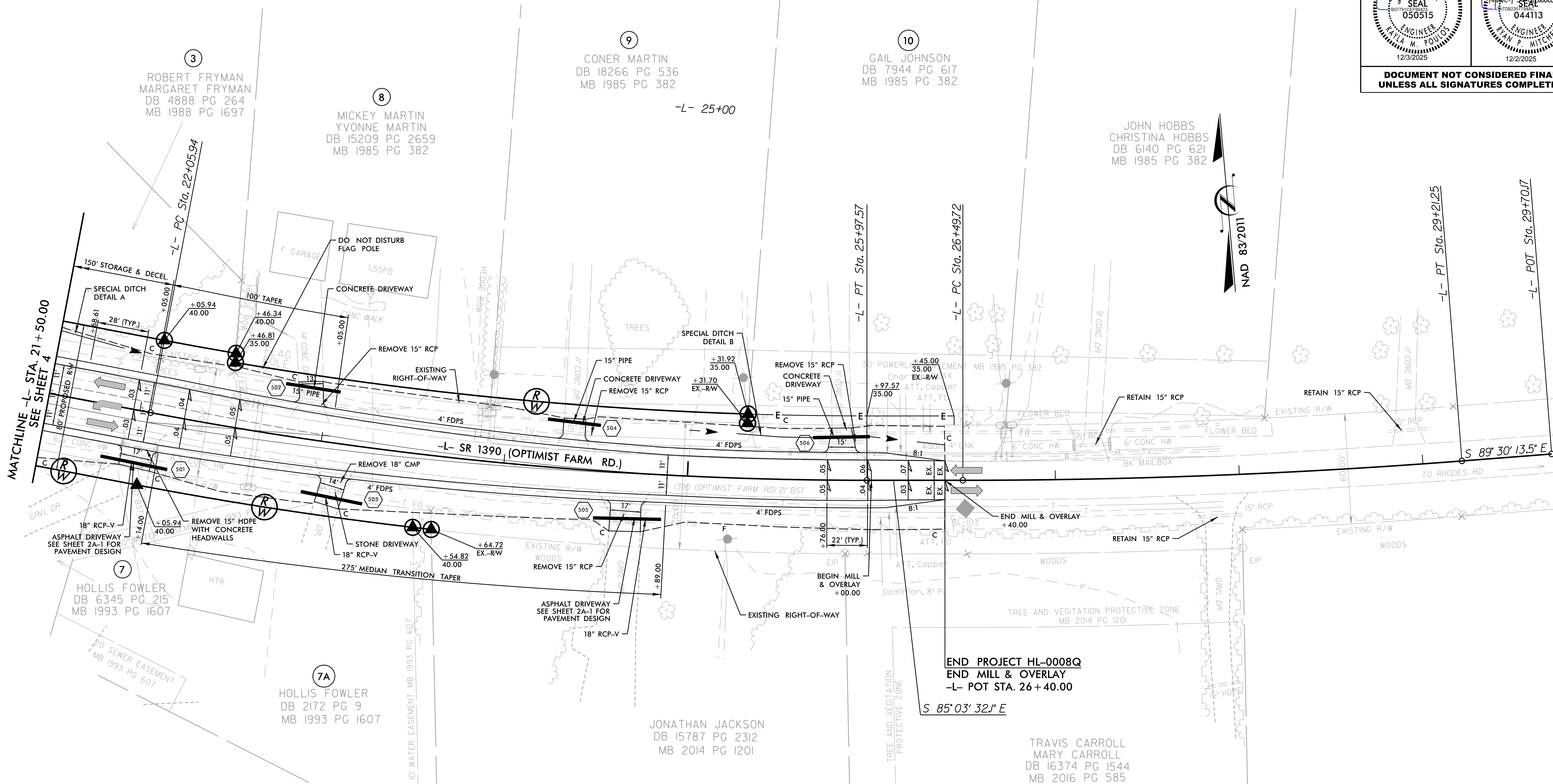
REVISIONS

NOTES:

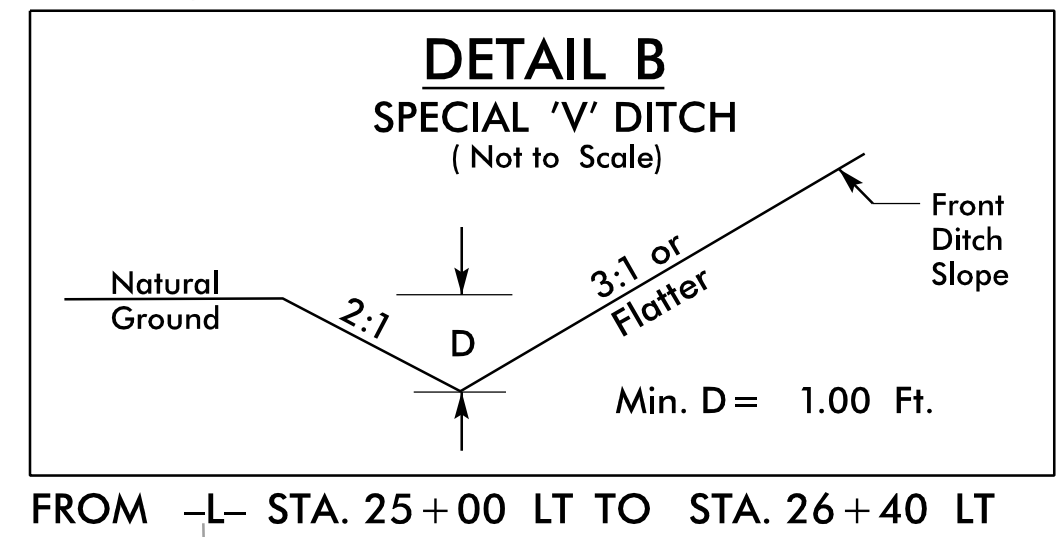
1. ALL DIMENSIONS ARE TO EDGE OF TRAVEL UNLESS OTHERWISE SPECIFIED.
2. CONTRACTORS TO MAINTAIN ACCESS TO ALL MAILBOXES WITHIN PROJECT LIMITS. CONTRACTOR TO RELOCATE AS NECESSARY.
3. ALL DRIVEWAY WIDTHS ARE 12' UNLESS OTHERWISE NOTED.



PROJECT REFERENCE NO.		SHEET NO.
HL-0008Q		5
RW SHEET NO.		
ROADWAY DESIGN ENGINEER	HYDRAULICS ENGINEER	
		
DOCUMENT NOT CONSIDERED FINAL UNLESS ALL SIGNATURES COMPLETED		



-L-	
PI Sta 24+02.34	PI Sta 27+85.55
$\Delta = 10^\circ 47' 16.9\"$ (LT)	$\Delta = 4^\circ 26' 41.5\"$ (LT)
$D = 2^\circ 45' 16.6\"$	$D = 1^\circ 38' 13.3\"$
$L = 391.64'$	$L = 271.52'$
$T = 196.40'$	$T = 135.83'$
$R = 2,080.00'$	$R = 3,500.00'$
$e = .05$	$e = EXIST.$
Runoff = 150	



FOR -L- PROFILE, SEE SHEET NO. 8